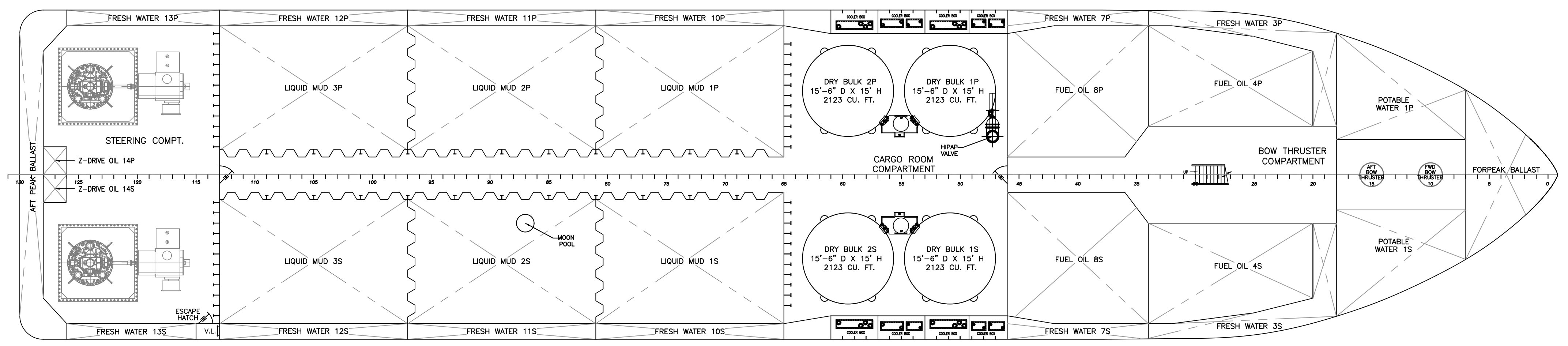
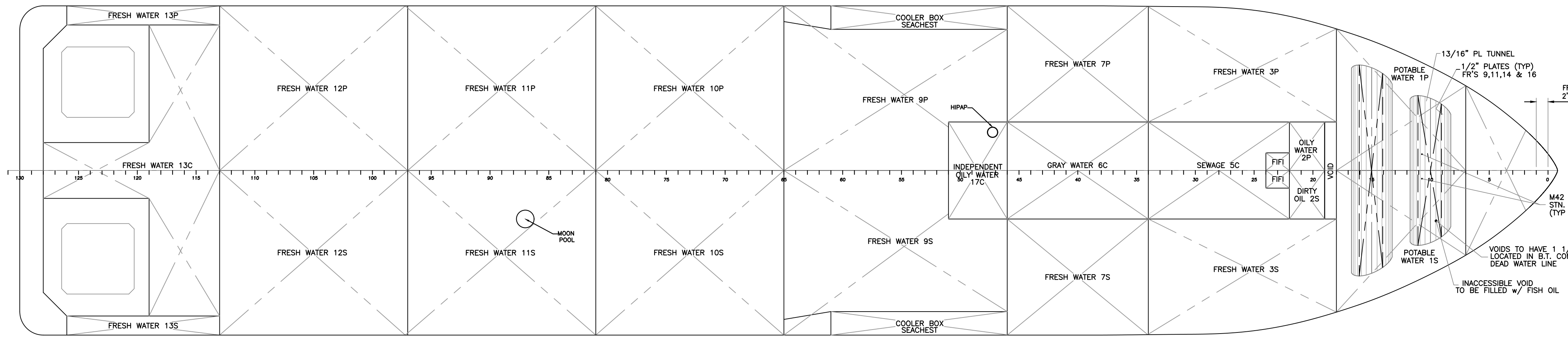


REVISIONS

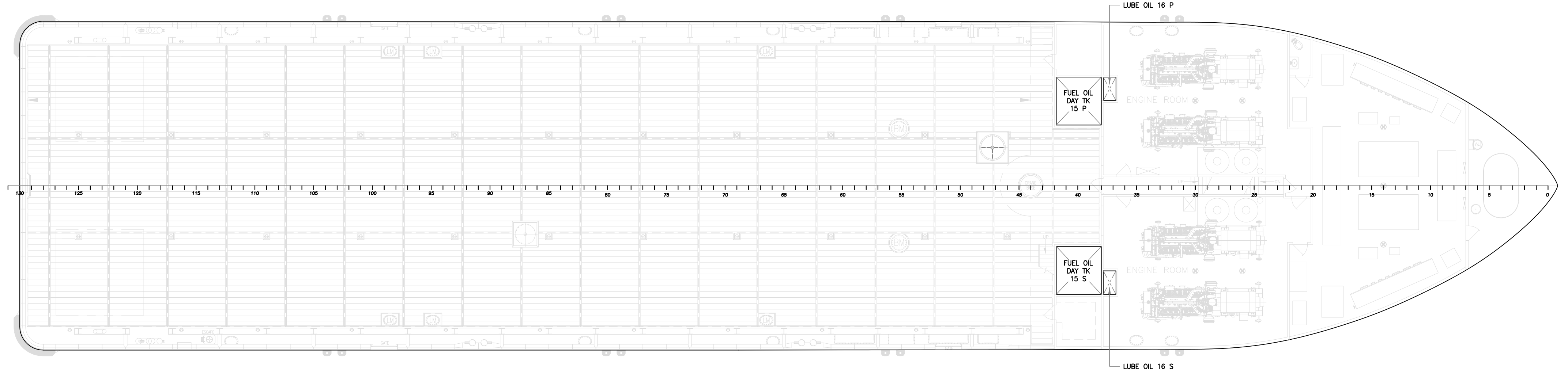
REV	ZONE	DESCRIPTION	DATE	BY
0	ALL	DRAWING REVISED TO CURRENT HOS STANDARDS. THIS DRAWING SUPERCEDES ALL PREVIOUS REVISIONS OF LVI DRAWING 365-0003 AND IS SPECIFIC TO HOS CLASS AND VESSEL NOTED. ISSUED APPROVED.	05/21/18	SMM
1	ALL	INSTALLED PORT HIPAP AND STBD MOONPOOL. REVISED TANK CAPACITIES.	09/12/18	MGS



HOLD PLAN
ABOVE DOUBLE BOTTOM




HOLD PLAN
DOUBLE BOTTOM



MAIN DECK PLAN

TANK IDENTIFICATION	VOLUME (100%)	LCG (FT)	TCG (FT)	VCG (FT)	VENT LOCATION	
					HEIGHT (IN)	ABOVE
CAPACITY OF WATER BALLAST (IN US GALLONS)						
FOREPEAK_BAL.C	29152.0	8.87a	0.0	11.8	30	FOCSLE DK
FW_3 P	31 172	49.32a	19.65p	8.68	30	FOCSLE DK
FW_3 S	31 172	49.32a	19.65s	8.68	30	FOCSLE DK
FW_7 P	20 122	80.40a	21.35p	6.49	30	MAIN DK
FW_7 S	20 122	80.40a	21.35s	6.49	30	MAIN DK
FW_9 P	22 083	112.89a	13.87p	2.02	30	MAIN DK
FW_9 S	22 083	112.89a	13.87s	2.02	30	MAIN DK
FW_10 P	32 776	146.00a	18.26p	5.60	30	MAIN DK
FW_10 S	32 776	146.00a	18.26s	5.60	30	MAIN DK
FW_11 P	32 776	178.00a	18.26p	5.60	30	MAIN DK
FW_11 S	32 606	178.02a	18.32s	5.62	30	MAIN DK
FW_12 P	32 508	209.90a	18.16p	6.42	30	MAIN DK
FW_12 S	32 508	209.90a	18.16s	6.42	30	MAIN DK
FW_13 C	33 221	233.73a	0.0	9.64	30	MAIN DK
FW_13 P	4 909	236.91a	26.61p	16.26	30	MAIN DK
FW_13 S	4 011	238.89a	26.60s	16.37	30	MAIN DK
AFTPEAK_BAL.C	11 427	257.17a	0.0	18.33	30	MAIN DK
TOTAL W.B. (US GAL.)	425 424					
CAPACITY OF CARGO FUEL OIL (IN US GALLONS)						
FO_TK_4 P	57 939	54.68a	15.98p	12.44	30	MAIN DK
FO_TK_4 S	57 939	54.68a	15.98s	12.44	30	MAIN DK
FO_TK_8 P	67 690	80.13a	14.07p	12.62	30	MAIN DK
FO_TK_8 S	67 690	80.13a	14.07s	12.62	30	MAIN DK
CAPACITY OF SHIP'S FUEL OIL (IN US GALLONS)						
SHIPS DAY FO_TK_15 P	5 982	80.00a	14.25p	27.5	30	MAIN DK
SHIPS DAY FO_TK_15 S	5 982	80.00a	14.25s	27.5	30	MAIN DK
TOTAL F.O. (US GAL.)	263 222					
CAPACITY OF POTABLE WATER (IN US GALLONS)						
POT_WATER_1 P	36 591	26.60a	11.15p	11.89	30	FOCSLE DK
POT_WATER_1 S	36 591	26.60a	11.15s	11.89	30	FOCSLE DK
TOTAL P.W. (US GAL.)	73 182					
CAPACITY OF LIQUID MUD (IN BARRELS)						
LIQUID MUD 1 P	2 107.7	145.69a	14.3p	12.63	30	MAIN DK
LIQUID MUD 1 S	2 107.7	145.69a	14.3s	12.63	30	MAIN DK
LIQUID MUD 2 P	2 149.7	177.37a	14.30p	12.63	30	MAIN DK
LIQUID MUD 2 S	2 127.2	177.41a	14.36s	12.63	30	MAIN DK
LIQUID MUD 3 P	2 038.2	208.91a	14.28p	13.18	30	MAIN DK
LIQUID MUD 3 S	2 038.2	208.91a	14.28s	13.18	30	MAIN DK
TOTAL L.M. (BARRELS)	12 568.7					
CAPACITY OF MISCELLANEOUS TANKS (IN US GALLONS)						
OILY WATER_P	1 089	41.00a	4.12p	1.50	30	MAIN DK
DIRTY OIL_S	1 089	41.00a	4.12s	1.50	30	MAIN DK
SEWAGE_5_C	8 181	56.65a	0.0	1.50	30	MAIN DK
GRAY WATER_6_C	8 903	80.00a	0.0	1.53	30	MAIN DK
IND. OILY WATER_17_C	3 648	97.04a	0.11s	1.53	30	MAIN DK
HO_14 P	901	253.98a	2.38p	18.27	30	MAIN DK
HO_14 S	901	253.98a	2.38s	18.27	30	MAIN DK
LO_16 P	880	74.75a	16.50p	27.50	30	FOCSLE DK
LO_16 S	880	74.75a	16.50s	27.50	30	FOCSLE DK
SUBTOTAL	26 472					
CAPACITY OF DRY BULK MUD TANKS (IN CUBIC FT)						
BULK CARGO 1 P	2 123.0	101.75a	14.00p	11.25	30	MAIN DK
BULK CARGO 1 S	2 123.0	101.75a	14.00s	11.25	30	MAIN DK
BULK CARGO 2 P	2 123.0	119.08a	14.00p	11.25	30	MAIN DK
BULK CARGO 2 S	2 123.0	119.08a	14.00s	11.25	30	MAIN DK
SUBTOTAL	8 492.0					

1.	OUTBOARD PROFILE & GENERAL ARRANGEMENT (LVI 365)	1.001									
NO.	TITLE	DRAWING NUMBER									
REFERENCES											
HOS 270 CLASS / HOS REMINGTON											
 <small>THIS DRAWING, DESIGN CONCEPT AND SPECIFICATIONS ARE THE PROPERTY OF HORNBECK OFFSHORE SERVICES AND ARE FURNISHED ON A CONFIDENTIAL BASIS WITH AN EXPRESSED UNDERSTANDING THAT THEY WILL NOT BE COPIED IN ANY MANNER USED FOR MANUFACTURE, SOLD, TRANSFERRED, NOR USED TO THE DETRIMENT OF SAID FIRM WITHOUT WRITTEN PERMISSION.</small>											
HORNBECK OFFSHORE SERVICES											
DRAWN BY:	270'-0" X 56'-0" X 21'-6"										
CH'KD. BY:	M.STANSBURY										
APPD. BY:	J.GUIDRY	<table border="1"> <tr> <td>TASK No.</td> <td>DRAWING No.</td> <td>SCALE: N.T.S.</td> </tr> <tr> <td>6760</td> <td>1.003</td> <td>DATE: 05/21/18</td> </tr> <tr> <td>HULL No. 365</td> <td>SY: LVI</td> <td>SHEET 1 OF 1</td> </tr> </table>	TASK No.	DRAWING No.	SCALE: N.T.S.	6760	1.003	DATE: 05/21/18	HULL No. 365	SY: LVI	SHEET 1 OF 1
TASK No.	DRAWING No.	SCALE: N.T.S.									
6760	1.003	DATE: 05/21/18									
HULL No. 365	SY: LVI	SHEET 1 OF 1									
		REV. 1									