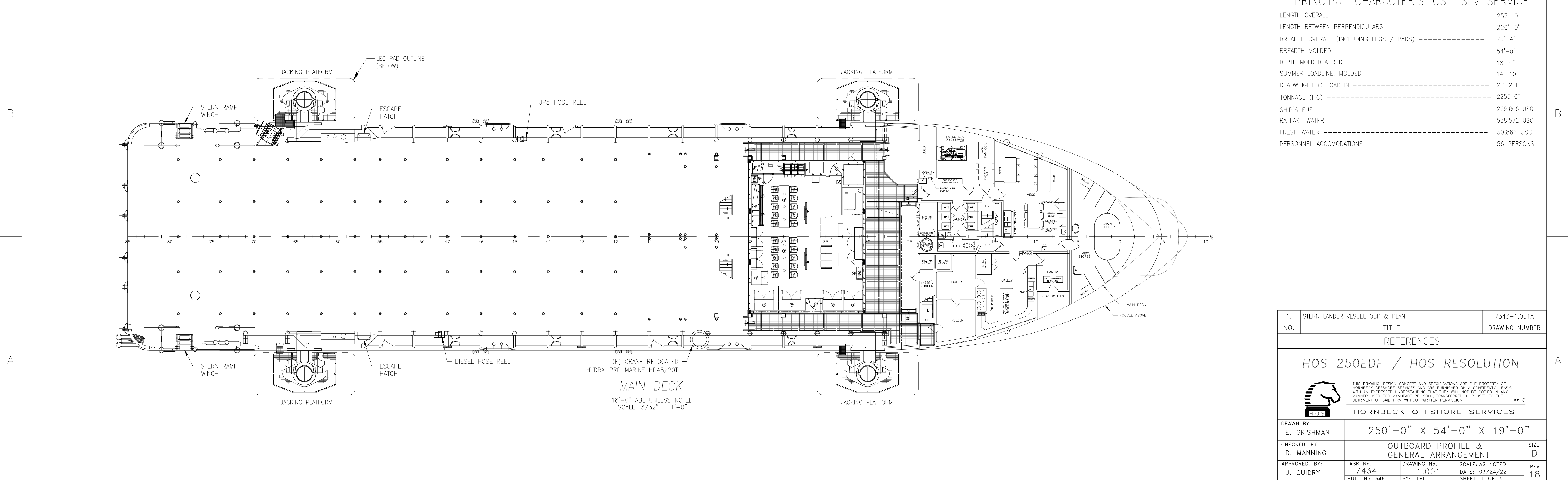



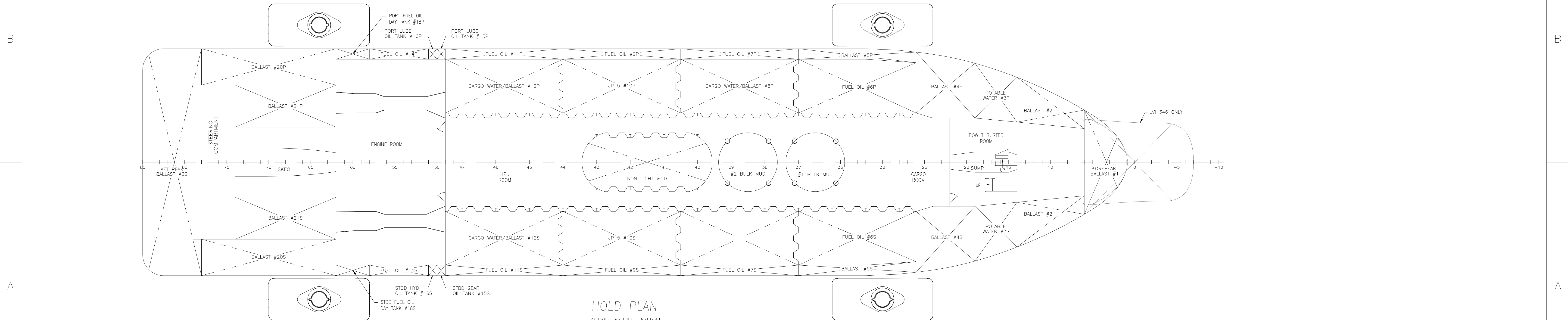
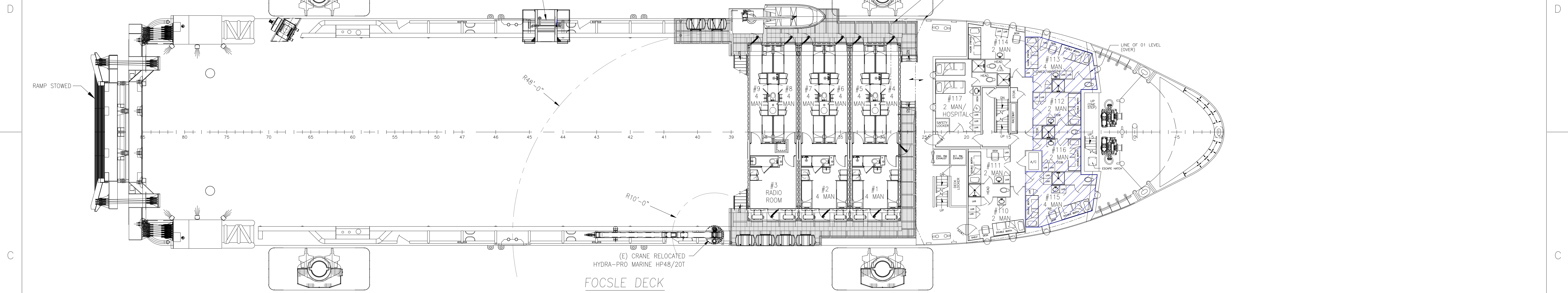
OUTBOARD PROFILE
SCALE: 3/32" = 1'-0"



MAIN DECK
18'-0" ABL UNLESS NOTED
SCALE: 3/32" = 1'-0"

PRINCIPAL CHARACTERISTICS		SLV SERVICE
LENGTH OVERALL	-----	257'-0"
LENGTH BETWEEN PERPENDICULARS	-----	220'-0"
BREADTH OVERALL (INCLUDING LEGS / PADS)	-----	75'-4"
BREADTH MOLDED	-----	54'-0"
DEPTH MOLDED AT SIDE	-----	18'-0"
SUMMER LOADLINE, MOLDED	-----	14'-10"
DEADWEIGHT @ LOADLINE	-----	2,192 LT
TONNAGE (ITC)	-----	2255 GT
SHIP'S FUEL	-----	229,606 USG
BALLAST WATER	-----	538,572 USG
FRESH WATER	-----	30,866 USG
PERSONNEL ACCOMMODATIONS	-----	56 PERSONS

1.	STERN LANDER VESSEL OBP & PLAN	7343-1.001A
NO.	TITLE	DRAWING NUMBER
REFERENCES		
HOS 250EDF / HOS RESOLUTION		
 <small>THIS DRAWING, DESIGN CONCEPT AND SPECIFICATIONS ARE THE PROPERTY OF HORNBECK OFFSHORE SERVICES AND ARE FURNISHED ON A CONFIDENTIAL BASIS WITH AN EXPRESSED UNDERSTANDING THAT THEY WILL NOT BE COPIED IN ANY MANNER USED FOR MANUFACTURE, SOLD, TRANSFERRED, NOR USED TO THE DETRIMENT OF SAID FIRM WITHOUT WRITTEN PERMISSION.</small>		
HORNBECK OFFSHORE SERVICES		
DRAWN BY:	250'-0" X 54'-0" X 19'-0"	
E. GRISHMAN		
CHECKED BY:	OUTBOARD PROFILE & GENERAL ARRANGEMENT	
D. MANNING		
APPROVED BY:	TASK No. 7434	DRAWING No. 1.001
J. GUIDRY	HULL No. 346	SY: LVI
	SCALE: AS NOTED	DATE: 03/24/22
	SHEET 1 OF 3	REV. 18
<small>LAST SAVE/PLT: 2/7/2024 5:14 PM ENG: JSS/LLA SHEET: AND 0 2254</small>		



	THIS DRAWING, DESIGN CONCEPT AND SPECIFICATIONS ARE THE PROPERTY OF HORNBECK OFFSHORE SERVICES AND ARE FURNISHED ON A CONFIDENTIAL BASIS WITH AN EXPRESSED UNDERSTANDING THAT THEY WILL NOT BE COPIED IN ANY MANNER USED FOR MANUFACTURE, SOLD, TRANSFERRED, NOR USED TO THE DETRIMENT OF SAID FIRM WITHOUT WRITTEN PERMISSION.			HOS ©
	OUTBOARD PROFILE & GENERAL ARRANGEMENT			SIZE D
	TASK No. 7434	DRAWING No. 1,001	SCALE: AS NOTED	REV. 18
	HULL No. 346	SY: LVI	DATE: 03/24/22 SHEET 2 OF 3	

