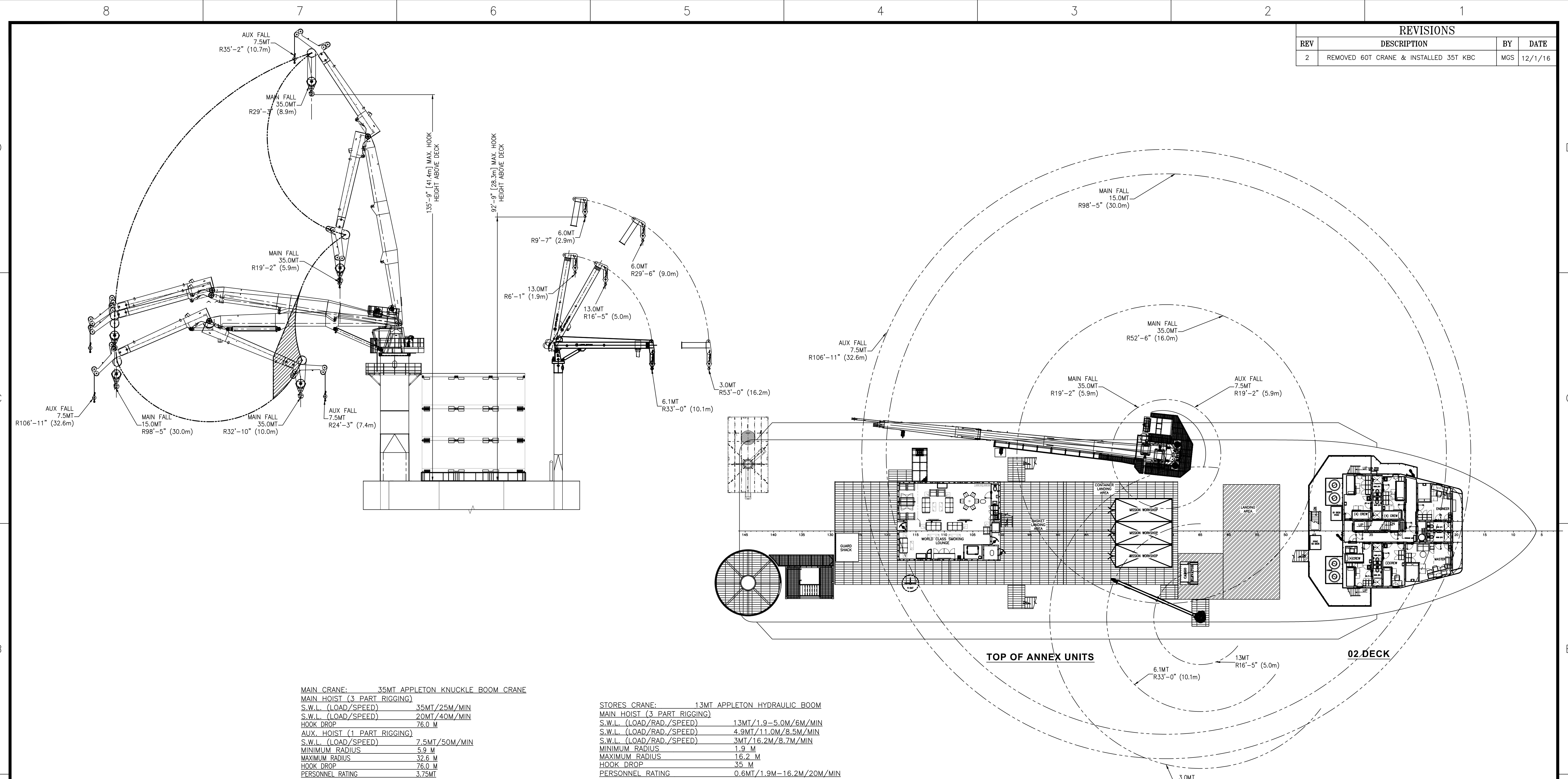


REVISIONS			
REV	DESCRIPTION	BY	DATE
2	REMOVED 60T CRANE & INSTALLED 35T KBC	MGS	12/1/16



**MAIN CRANE:** 35MT APPLETON KNUCKLE BOOM CRANE  
**MAIN HOIST (3 PART RIGGING)**  
 S.W.L. (LOAD/SPEED) 35MT/25M/MIN  
 S.W.L. (LOAD/SPEED) 20MT/40M/MIN  
 HOOK DROP 76.0 M  
**AUX. HOIST (1 PART RIGGING)**  
 S.W.L. (LOAD/SPEED) 7.5MT/50M/MIN  
 MINIMUM RADIUS 5.9 M  
 MAXIMUM RADIUS 32.6 M  
 HOOK DROP 76.0 M  
 PERSONNEL RATING 3.75MT

**STORES CRANE:** 13MT APPLETON HYDRAULIC BOOM  
**MAIN HOIST (3 PART RIGGING)**  
 S.W.L. (LOAD/RAD./SPEED) 13MT/1.9-5.0M/6M/MIN  
 S.W.L. (LOAD/RAD./SPEED) 4.9MT/11.0M/8.5M/MIN  
 S.W.L. (LOAD/RAD./SPEED) 3MT/16.2M/8.7M/MIN  
 MINIMUM RADIUS 1.9 M  
 MAXIMUM RADIUS 16.2 M  
 HOOK DROP 35 M  
 PERSONNEL RATING 0.6MT/1.9M-16.2M/20M/MIN

35T Model KB1000-98							
MAIN FALL RADIUS	ONBOARD LIFTING 1.5M SIGNIFICANT WAVE HEIGHT		OFFBOARD LIFTING 1.5M SIGNIFICANT WAVE HEIGHT		OFFBOARD LIFTING 2.5M SIGNIFICANT WAVE HEIGHT		
	SWL	Cv	SWL	Cv	SWL	Cv	
19.4FT (5.9M)	35.0MT	1.40	35.0MT	1.53	32.0MT	1.90	
32.8FT (10.0M)	35.0MT	1.40	35.0MT	1.53	32.0MT	1.90	
39.4FT (12.0M)	35.0MT	1.40	35.0MT	1.53	32.0MT	1.90	
45.9FT (14.0M)	35.0MT	1.40	35.0MT	1.53	32.0MT	1.90	
49.2FT (15.0M)	35.0MT	1.40	35.0MT	1.53	30.0MT	1.93	
52.5FT (16.0M)	35.0MT	1.40	30.0MT	1.58	26.0MT	1.99	
59.1FT (18.0M)	30.0MT	1.40	25.0MT	1.63	22.0MT	2.07	
65.6FT (20.0M)	25.0MT	1.40	20.0MT	1.70	18.0MT	2.18	
72.2FT (22.0M)	22.0MT	1.40	18.0MT	1.74	15.0MT	2.29	
78.7FT (24.0M)	20.0MT	1.40	16.0MT	1.78	14.0MT	2.33	
85.3FT (26.0M)	19.0MT	1.40	14.0MT	1.83	12.0MT	2.43	
88.6FT (27.0M)	18.0MT	1.40	12.0MT	1.89	10.0MT	2.56	
91.9FT (28.0M)	16.0MT	1.40	10.0MT	1.97	8.0MT	2.72	
98.4FT (30.0M)	15.0MT	1.40	10.0MT	1.97	8.0MT	2.72	

13T Model EB70-53-33 / Boom Retracted			
RADIUS	BOOM ANGLE DEG	DOCK SIDE CAPACITY	OFFBOARD CAPACITY SEA STATE 3
6.1FT (1.9M)	80.00	13.0MT	13.0MT
6.6FT (2.0M)	78.51	13.0MT	13.0MT
9.8FT (3.0M)	72.72	13.0MT	12.0MT
13.1FT (4.0M)	66.72	13.0MT	9.4MT
16.4FT (5.0M)	60.43	13.0MT	7.3MT
19.7FT (6.0M)	53.70	10.8MT	5.8MT
23.0FT (7.0M)	46.30	9.2MT	4.7MT
26.2FT (8.0M)	37.81	7.9MT	3.8MT
29.5FT (9.0M)	27.13	6.9MT	3.3MT
32.8FT (10.0M)	7.03	6.1MT	3.0MT
33.0FT (10.1M)	0.00	6.1MT	3.0MT

13T Model EB70-53-33 / Boom Extended			
RADIUS	BOOM ANGLE DEG	DOCK SIDE CAPACITY	OFFBOARD CAPACITY SEA STATE 3
9.6FT (2.9M)	80.00	6.0MT	6.0MT
9.8FT (3.0M)	79.28	6.0MT	6.0MT
13.1FT (4.0M)	75.68	6.0MT	6.0MT
16.4FT (5.0M)	72.02	6.0MT	6.0MT
19.7FT (6.0M)	68.28	6.0MT	6.0MT
23.0FT (7.0M)	64.44	6.0MT	5.1MT
26.2FT (8.0M)	60.46	6.0MT	4.3MT
29.5FT (9.0M)	56.32	6.0MT	3.7MT
32.8FT (10.0M)	51.97	5.5MT	3.2MT
36.1FT (11.0M)	47.33	4.9MT	2.8MT
39.4FT (12.0M)	42.31	4.4MT	2.4MT
42.7FT (13.0M)	36.73	4.0MT	2.1MT
45.9FT (14.0M)	30.29	3.6MT	1.9MT
49.2FT (15.0M)	22.20	3.3MT	1.7MT
52.5FT (16.0M)	8.43	3.0MT	1.6MT
53.0FT (16.2M)	0.00	3.0MT	1.6MT

### HOSMAX MPSV FLOTEL

THIS DRAWING, DESIGN CONCEPT AND SPECIFICATIONS ARE THE PROPERTY OF HORNBECK OFFSHORE SERVICES AND ARE FURNISHED ON A CONFIDENTIAL BASIS WITH AN EXPRESSED UNDERSTANDING THAT THEY WILL NOT BE COPIED IN ANY MANNER USED FOR MANUFACTURE, SOLD, TRANSFERRED, NOR USED TO THE DETRIMENT OF SAAS FROM WITHOUT WRITTEN PERMISSION.

**HORNBECK OFFSHORE SERVICES**  
 DRAWN BY: JKD  
 CHK'D. BY:  
 APP'D. BY:  
 TASK # 6207

292'-0" X 76'-0" X 24'-6"  
**CRANE AND LIFTING ARRANGEMENT**  
 SCALE: 1/16" = 1'-0"  
 DRAWING # 6.805  
 DATE: 06-2-2014  
 HULL # ESG 204  
 SHEET 1 OF 1

REV. 2